



New Orleans Career Center

at Former McDonogh No. 35 School Site (1331 Kerlerec Street)

Community Meeting

January 27, 2021

Excellence.Equity.Community.
RecoverySchoolDistrict

Introductions

NOLA Public Schools

RSD – Recovery School District

JACOBS/CSRS: Program Managers

Bright Moments: Community Outreach

SCNZ: Architects

New Orleans Career Center: Operator

Contractor: Broadmoor



Background

New Orleans Career Center

Master Plan

Board of Elementary and Secondary Education (BESE)

Department of Education (DOE)

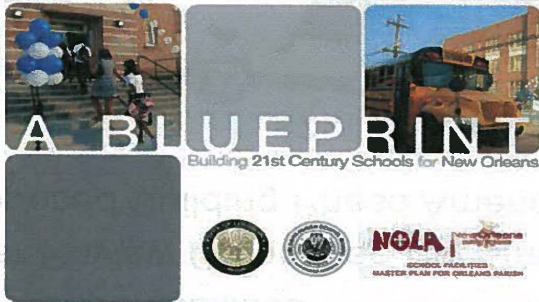
NOLA Public Schools (NOLA PS)

Recovery School District (RSD)



Background - Master Plan

School Facilities Master Plan for Orleans Parish



Recovery School District and Orleans Parish School Board
Proposed Master Plan Amendments

Summer 2011

www.rebuildingnolaschools.com

Excellence.Equity.Community.
RecoverySchoolDistrict

SCHOOL FACILITIES MASTER PLAN FOR ORLEANS PARISH

New Orleans
Career Center

Former McDonogh No. 35 Site

Educational Specifications

RECOVERY
School District
Excellence.Equity.Community.

A BLUEPRINT

**Based on the components of the
Master Plan,
Career Center will have space for:**

Skilled Craft Pathway

CAD/Maker Lab Pathway

Medical Pathway

Culinary/Hospitality Pathway

Programming/Coding/Data Pathway

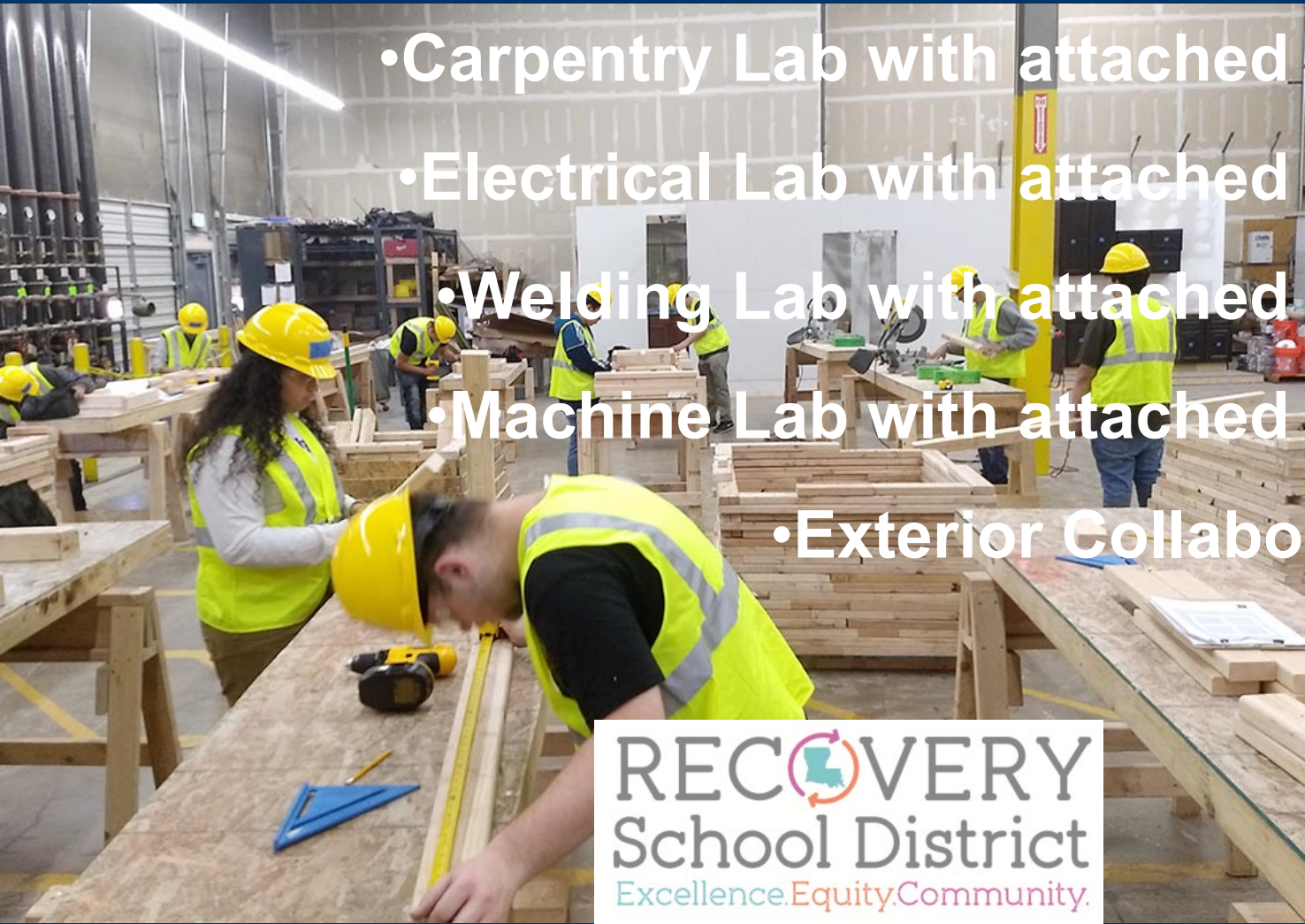
**The Career Center will be designed :
according to new Building Codes
will be designed as a LEED Certified school
will be ADAAG Compliant
and with same amenities and infrastructure
as other Master Plan schools**



Skilled Craft Pathway

will consist of:

- Carpentry Lab with attached Classroom
- Electrical Lab with attached Classroom
- Welding Lab with attached Classroom
- Machine Lab with attached Classroom
- Exterior Collaboration Area



CAD/Maker Lab Pathway

will consist of:

- Maker Lab
- (4) CAD Labs
- Storage Rooms



Medical Pathway

will consist of:

- Nurse/Patient Simulation Lab
- Emergency Medical Tech Lab
- Emergency Medical Response Lab
- (4) Medical Assistant Labs
- Medical Flex Space
- Locker rooms



Culinary/Hospitality Pathway

will consist of:

- Coffee/Pastry Point of Sale Lab
- Culinary Lab
- (2) Culinary Learning Centers
- Kitchen with support spaces
- Dining
- Locker rooms



Programming/Coding/Data Pathway

will consist of:

- (6) Programming Labs
- (6) Data Labs
- Data Infrastructure Lab
- Video Editing/Presentation Lab



School Administrative Areas

will consist of:

- Administrative Offices
- Reception Area
- Teacher Work Room
- Student Support Services



Maintenance and Custodial Services

will consist of:

Receiving Storage

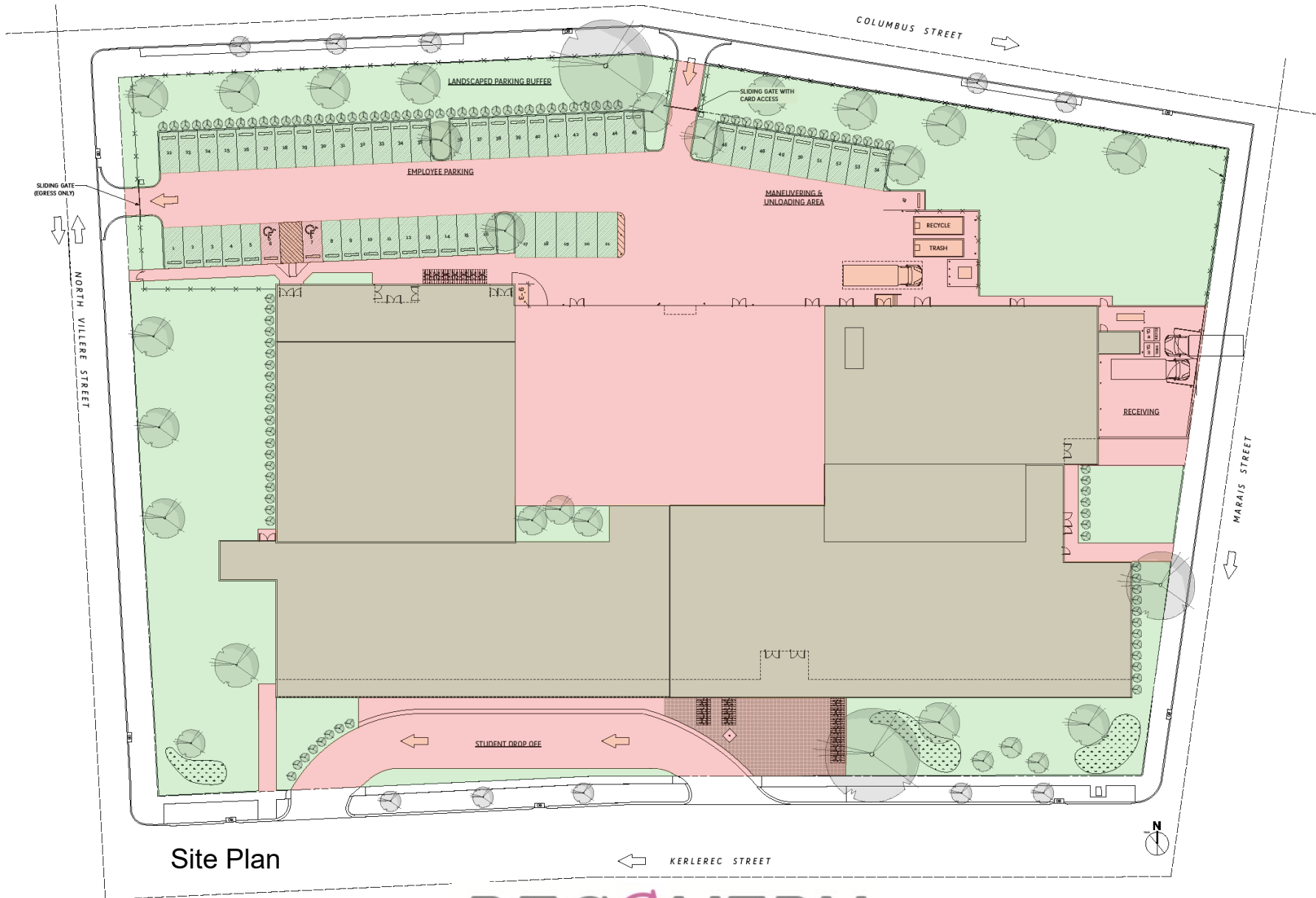
Maintenance/Repair Area

Custodial Equipment/Supplies

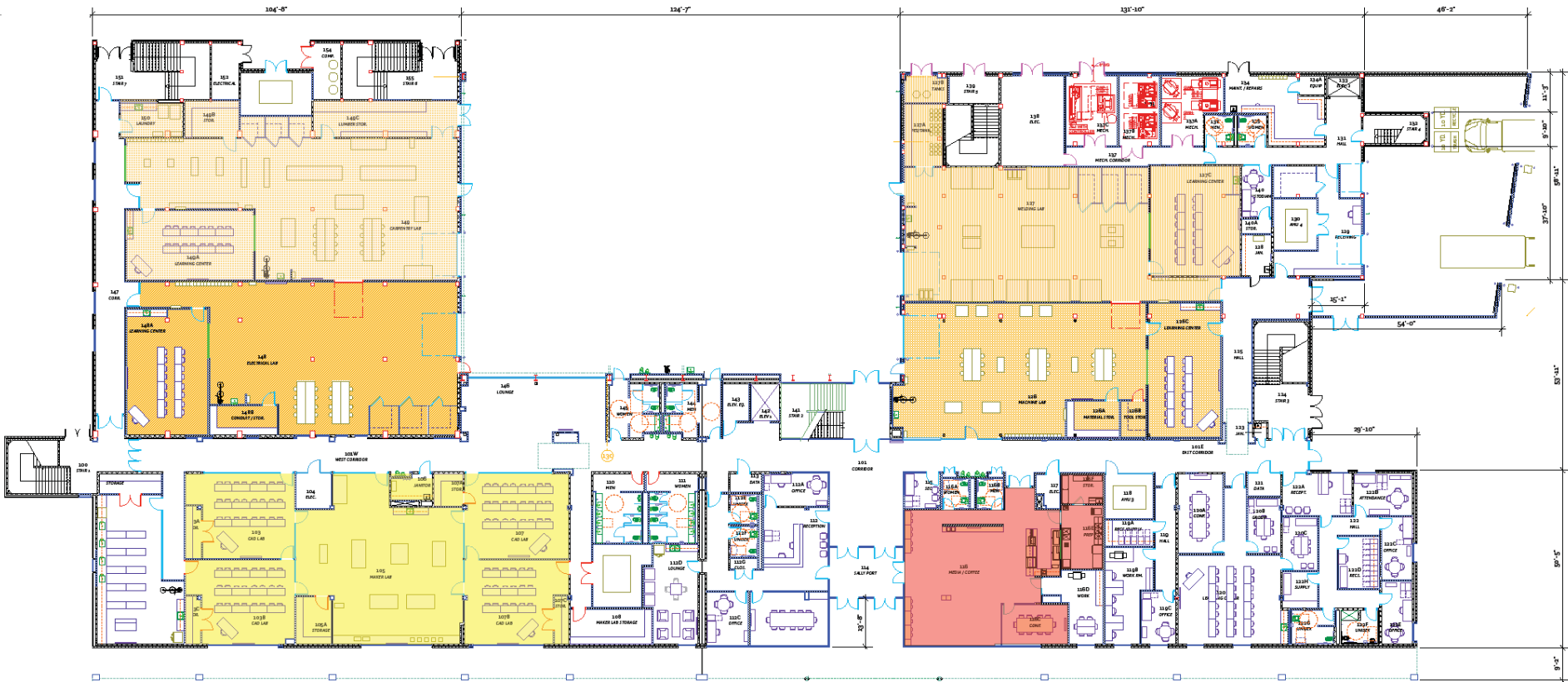
Restroom and Lockers

Janitor's Closets





Site Plan

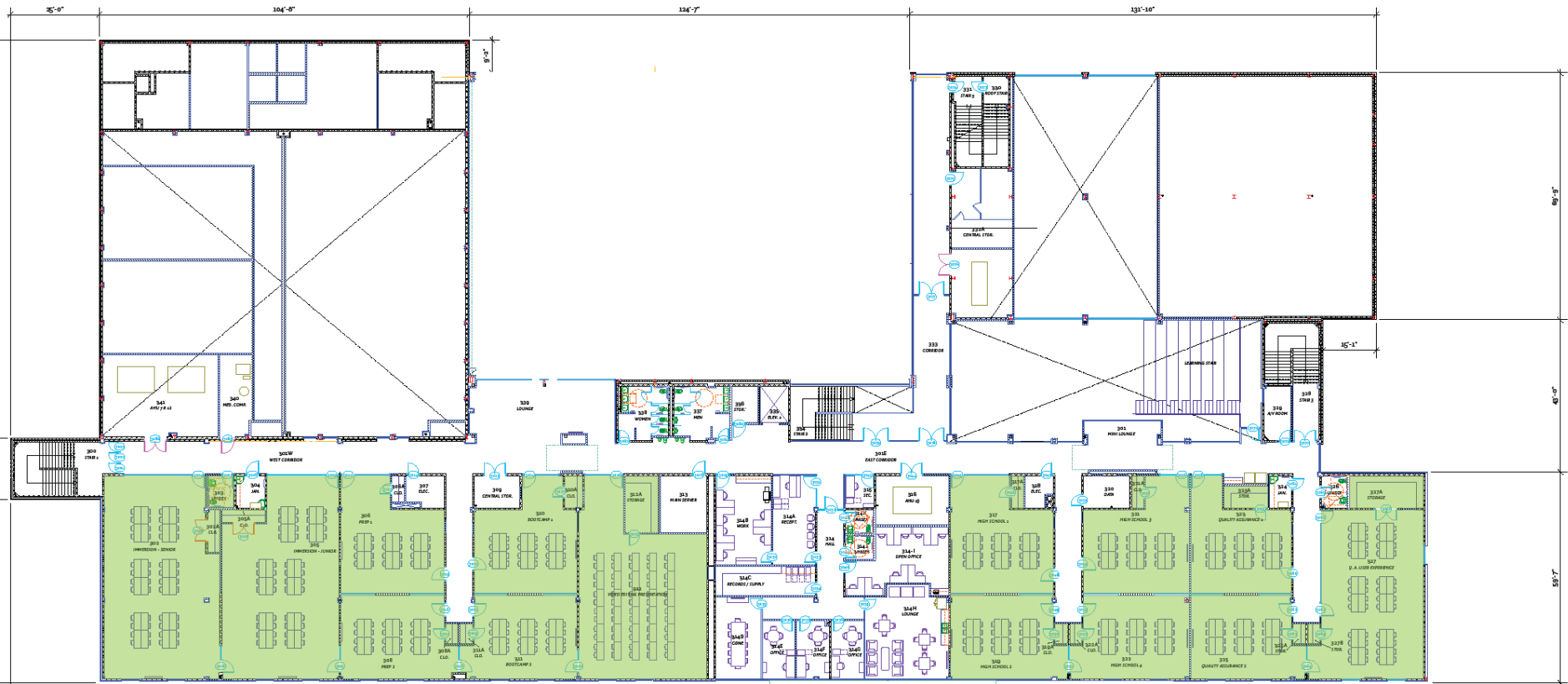


CAREER PATHWAY PLAN KEY

- SKILLED CRAFT (CONSTRUCTION) PATHWAY
- CAD / MAKER LAB PATHWAY
- COFFEE SHOP & CULINARY PATHWAY
- MEDICAL PATHWAY
- PROGRAMMING / CODING PATHWAY & DATA INFRASTRUCTURE

- MACHINE LAB
- WELDING LAB
- CARPENTRY LAB
- ELECTRICAL LAB

First Floor Plan



CAREER PATHWAY PLAN KEY

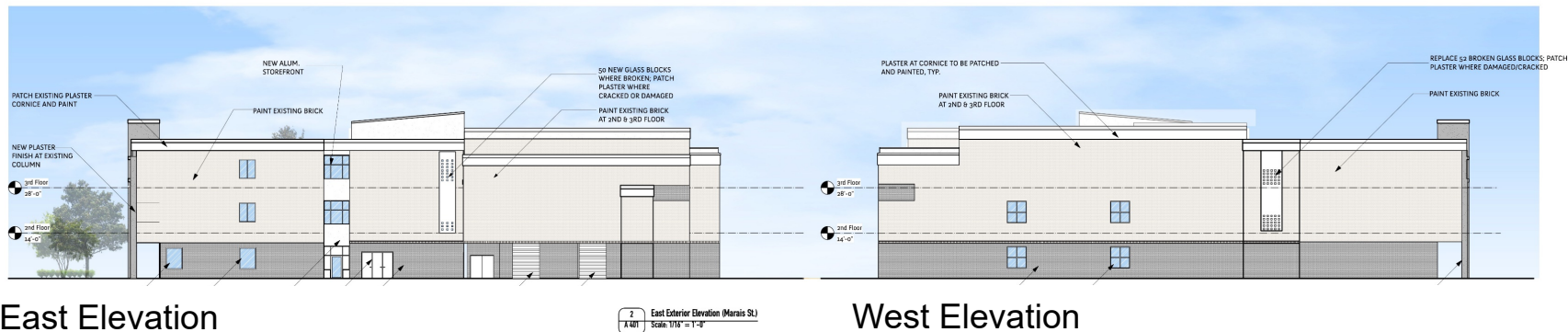
- SKILLED CRAFT (CONSTRUCTION) PATHWAY
- CAD / MAKER LAB PATHWAY
- COFFEE SHOP & CULINARY PATHWAY
- MEDICAL PATHWAY
- PROGRAMMING / CODING PATHWAY & DATA INFRASTRUCTURE

- MACHINE LAB
- WELDING LAB
- CARPENTRY LAB
- ELECTRICAL LAB

Third Floor Plan

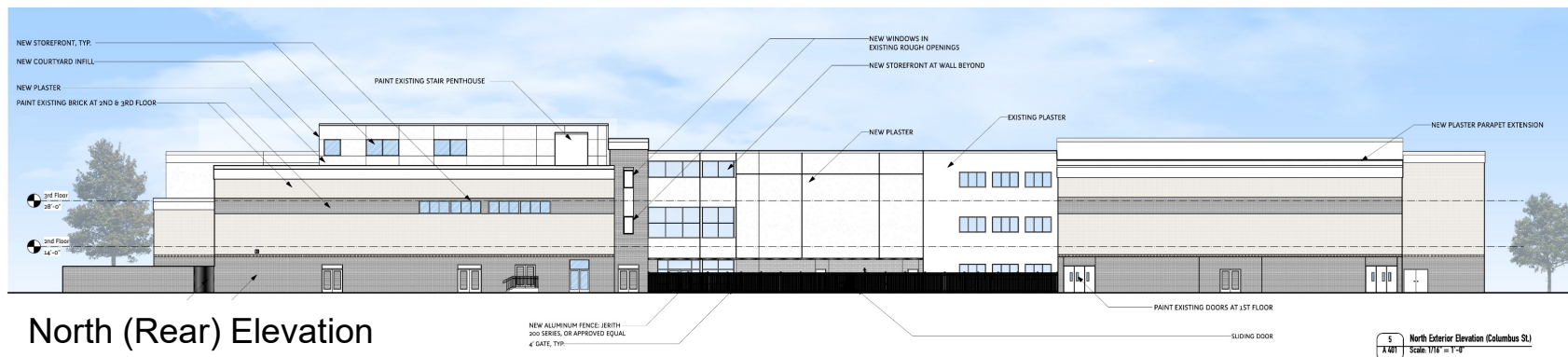


South (Front) Elevation



East Elevation

West Elevation



North (Rear) Elevation



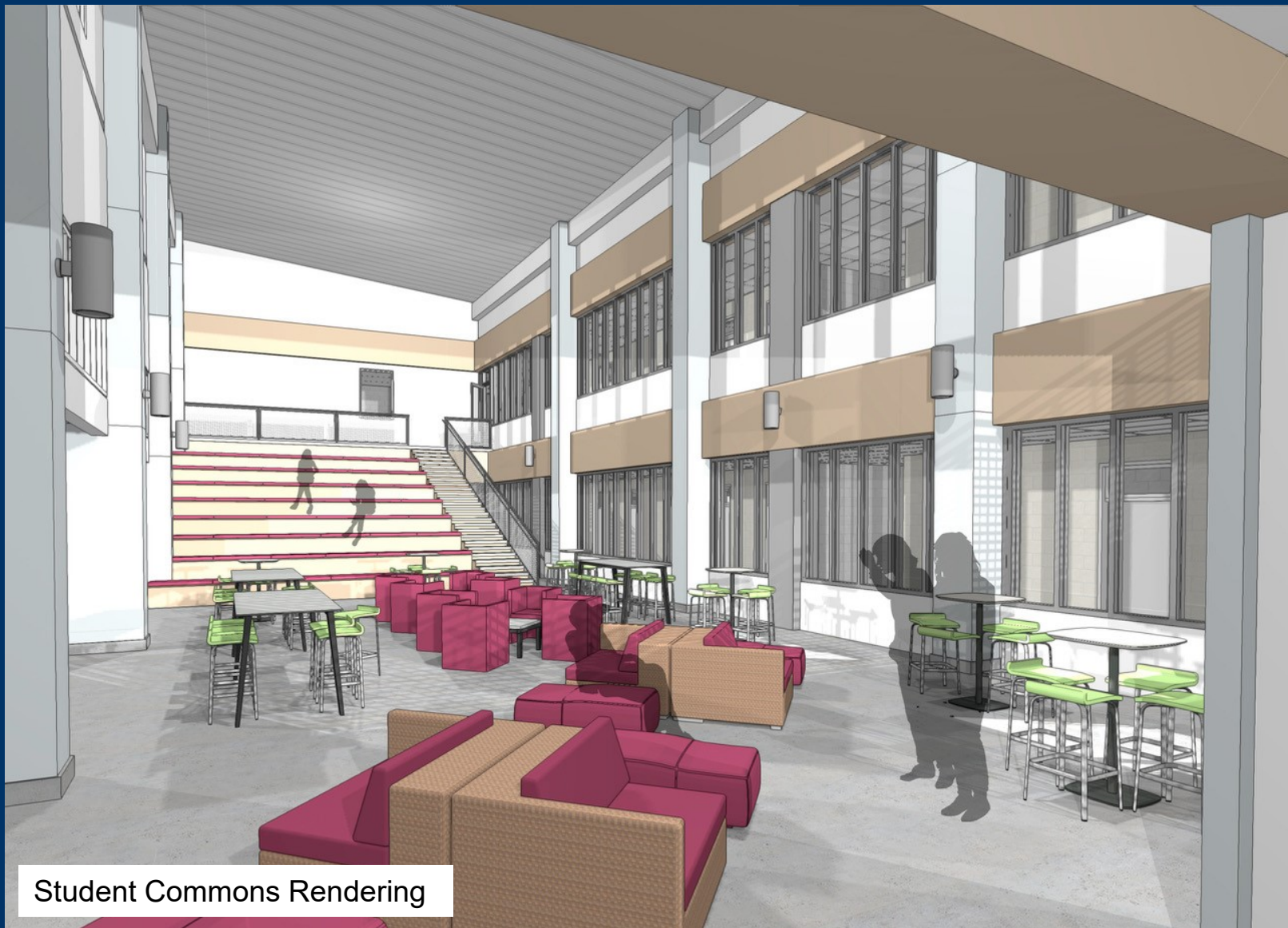
Southwest Perspective Rendering



Student Commons Rendering



Student Commons Rendering



Student Commons Rendering

Funding: CDBG & FEMA

Tentative Schedule:

Contractor NTP... January 8, 2021

Construction: 660 days

Completion Date...December, 2022

Career Technical High School



WHO WE ARE

- Broadmoor was founded in 1973 and has served New Orleans for almost 50 years.
- We offer construction, construction management, and design-build services.
- We serve commercial, industrial, and government markets.
- Broadmoor has averaged \$100 million in revenue for the last 25 years, however this is not how we measure our success. We measure our success on our ability to select projects that match our core philosophy.

CORE VALUES

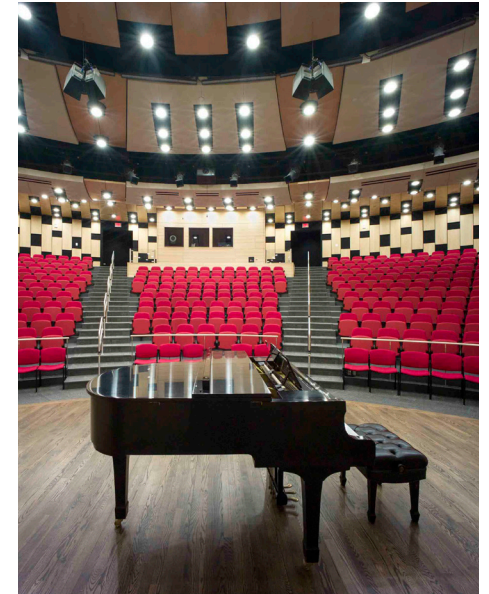
WE TREAT OUR PEOPLE LIKE FAMILY
WE KEEP OUR PROMISES
DO THE RIGHT THING
NEVER BE SATISFIED
PERPETUATE THE LEGACY BY BEING A
PART OF SOMETHING SPECIAL

CORE PURPOSE

TO HONORABLY
SERVE OUR
COMMUNITIES

PAST PROJECTS

- Tulane University Dining Commons
- Tulane University Goldring-Woldenberg Business Complex
- Holy Cross High School
- George Washington Carver High School
- Loyola University Monroe Hall



OUR TEAM



Project Manager
Jef Farner



Superintendent
Joe Williams



Superintendent
Bryan Newman



Project Manager
Brent Jones



Project Engineer
Quentin Cross

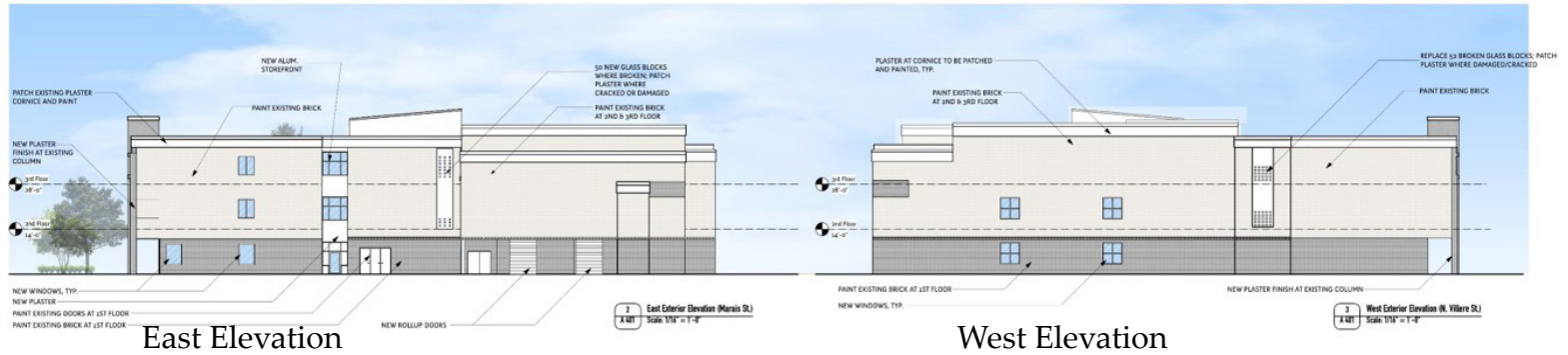


Assistant Project Manager
Pedro Molina

CAREERTECH RENDERING

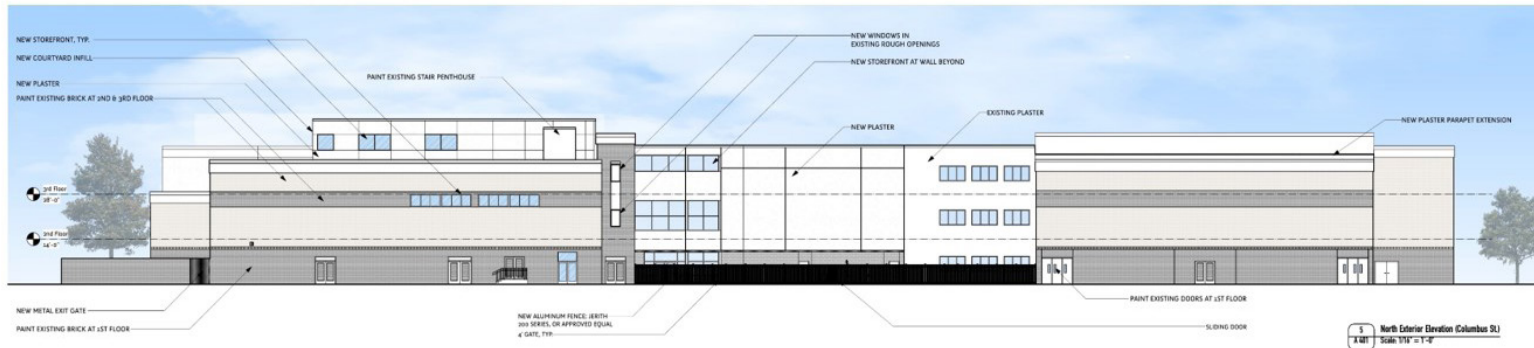


South (Front) Elevation



East Elevation

West Elevation



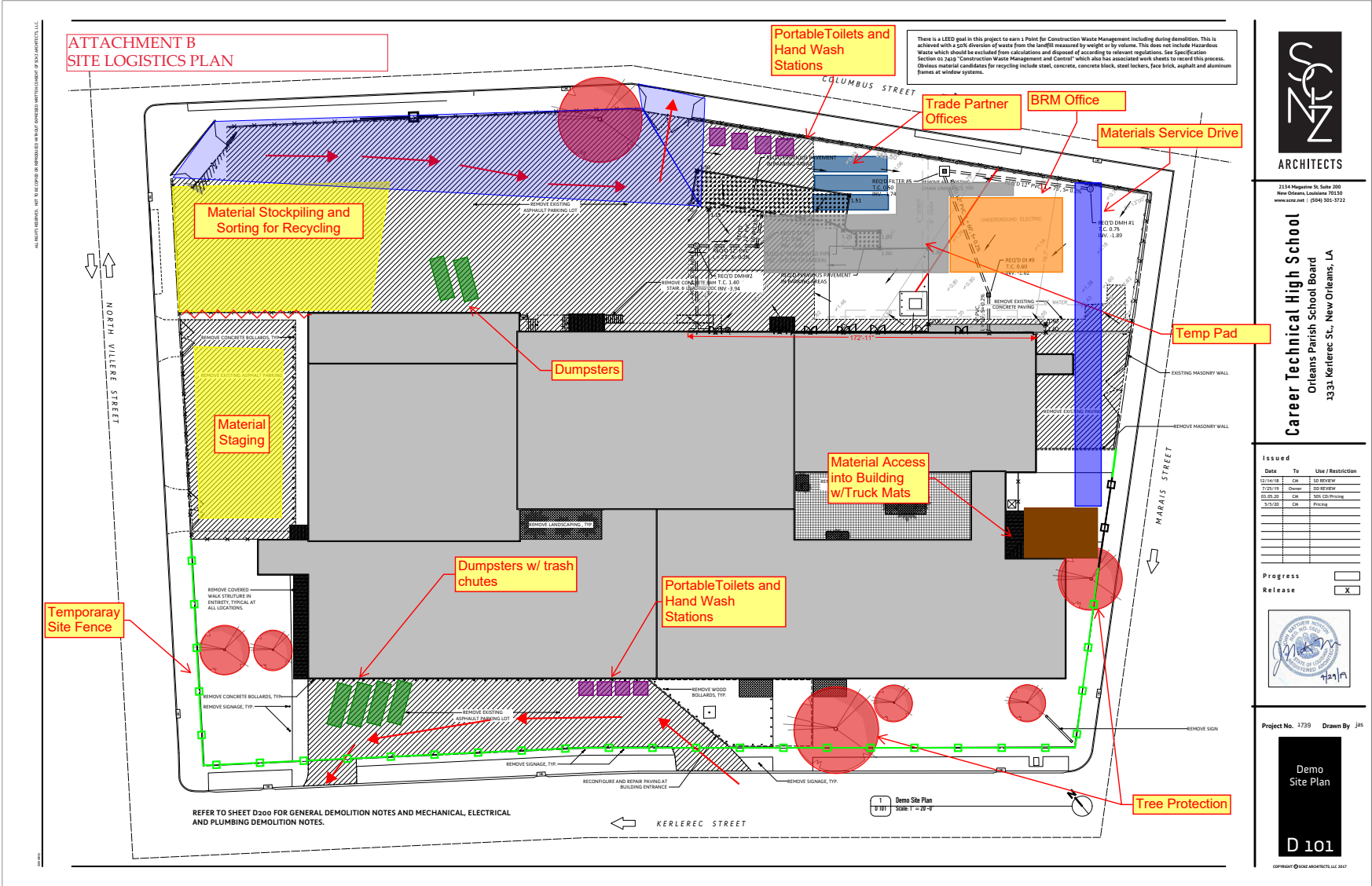
North (Rear) Elevation

CAREERTECH RENDERING



Southwest Perspective Rendering

PROJECT LOGISTICS



MATERIAL DELIVERY PLAN



SITE OFFICE

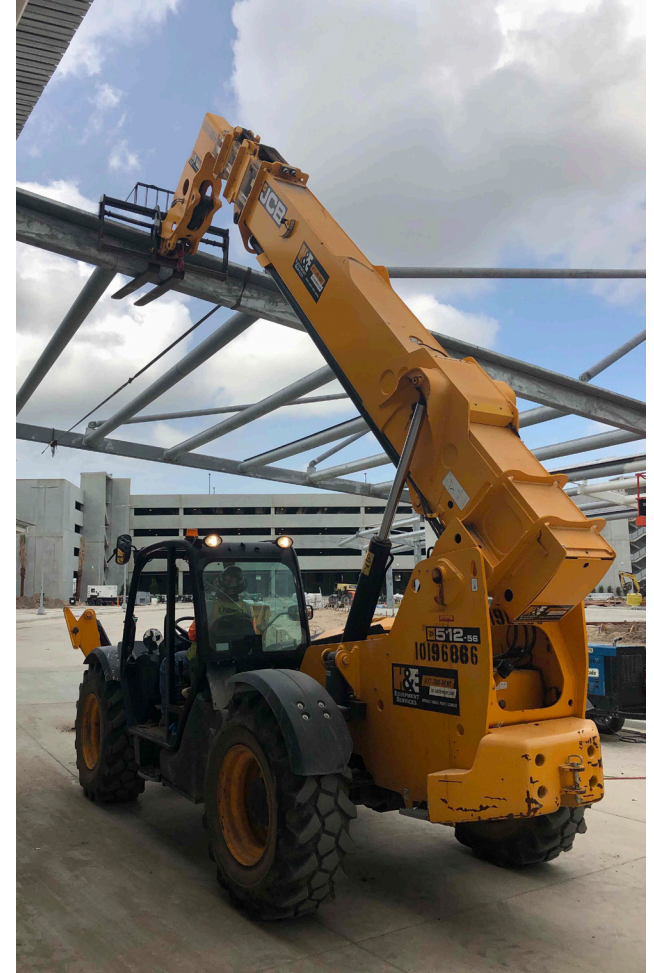
Our site office is located on site
1331 Kerlerec Street, New Orleans, LA 70116

Construction Operations
6am-5pm



PROJECT MILESTONES

- 01/19/21 - Demolition Start
- 05/19/21 - Demolition End
- 05/20/21 - Pile Drive Start
- 08/05/21 - Steel Erection Start
- 12/30/21 - Interior Finishes Start
- 05/25/22 - Site Demo Start
- 10/27/22 - Substantial Completion



DBE PARTICIPATION



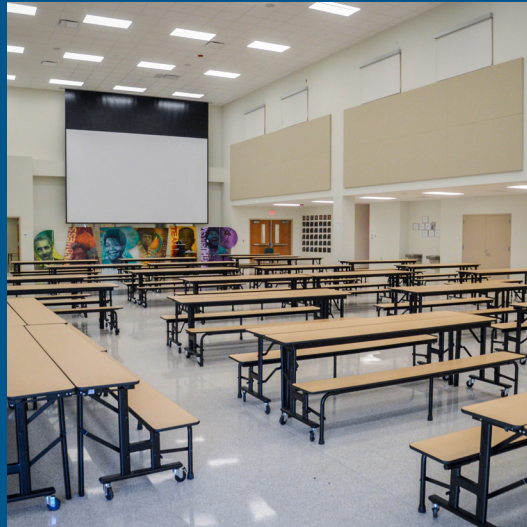
➔ Anticipated DBE participation is approximately **38%** of total contract or **\$10.3 million**.

We anticipate Section 3 participation to amount to 6% or \$1.6 million of the total contract.

PAST PROJECTS: DBE PARTICIPATION

George Washington Carver High School

- Our goal on this project was to reach 30% DBE participation and we exceeded this goal, achieving a total of **34%**.
- Broadmoor committed **\$16 million** in DBE contracts on this project.



COMMUNITY OUTREACH

Career Technical High School: DBE Participation

Community Outreach - Job Opportunities

- Onsite Bulletin Board
- Broadmoor Website
- Broadmoor Facebook Page
- Coordination with Community Organizations



COMMUNITY INFORMATION

Community Outreach Partners – Bright
Moments School's Rebuilding Information
Line –
877-891-4422

*Any questions or information needed
about this project, please contact Bright
Moments at the above listed phone
number.

Thank You!

School's Rebuilding Information Line
877-891-4422

BROADMOOR

JACOBS / CSRS

PROGRAM MANAGEMENT

RECOVERY
School District
Excellence.Equity.Community.

Drawing Disclaimer

- These drawings are a copy of the Conceptual Design presentation that was displayed during Community Meeting on 1/27/2021. They are the property of the RSD/NOLA PS and are for information purposes only. The RSD/NOLA PS reserves the right to make additions, deletions and modifications to the drawings as the RSD/OPSB may deem appropriate or desirable. The drawings are diagrammatic images. The dimensions and square footages are approximations and do not represent the final product.